

Improve User Engagement with SAP® Work Zone for HR

Accessing multiple applications to get your work done can be complicated. SAP Work Zone for HR is here to change that. It's a new way to work that offers you everything you need in one place – and it is all centered around the employee experience.



Engagement

Top-down and two-way communications engage employees. They need to be agile and informed, moving in lockstep with the latest programs, plans, strategies, health and safety requirements, and more. Provide clear corporate communications to individual contributors to your entire workforce along with an open platform where they can ask and find answers to their questions and collaborate with people based on shared interests.



Productivity

Increase employee productivity with a unified entry point for everything they need at work. In addition to pushing relevant content based on an employee's role, the platform also lets employees configure their own workspace, from changing the layout and colors to adding the necessary apps they need in order to do their work.



Intelligent Enterprise

Enable an intelligent enterprise by giving employees access to both SAP and non-SAP solutions from the convenience of any location on any device. Use guided experiences to help employees navigate complex business processes and intelligently surface personalized recommendations, insights, and actions.

What You Can Expect

Unifying the employee experience with SAP Work Zone for HR offers tremendous benefits:



19%

lower training and onboarding costs*

73%

reduction in IT labor related to managing the corporate intranet*

16%

decrease in time to access key info and expertise*

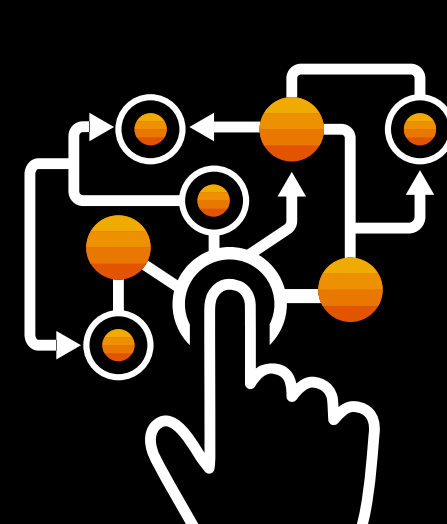
*A Forrester Total Economic Impact™ study commissioned by SAP in August 2020

A Single, Unified Employee Experience

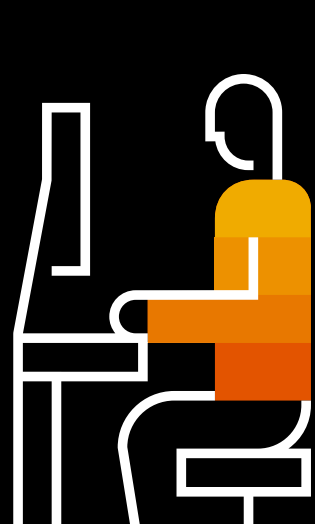
Remote work is not the future, it is now. And today's digital workers want a consistent user experience that is accessible from everywhere, at any time, and on any connected device. SAP Work Zone for HR provides that and more:



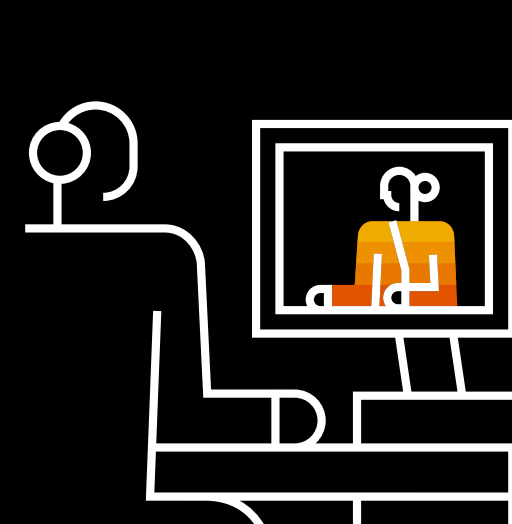
Intelligently sourced employee-relevant recommendations, insights, and actions



Cross-departmental guided experiences that simplify complex processes



Personalized, consumer-level user experience



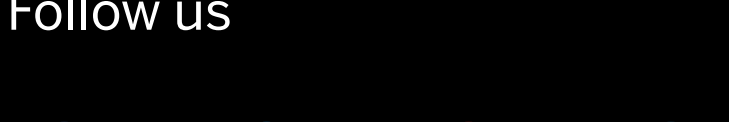
A two-way employee communication channel



SAP Work Zone for HR provides a new way to work. With a **personalized, intuitive digital workplace experience**, employees have **easy access** to relevant business applications, processes, information, and communication – **all in one place**, with the employee at the center.

[Click here](#) to learn more about SAP Work Zone for HR.

Follow us



www.sap.com/contactsap